



MONTHLY MEMBERSHIP PROGRESS REPORT

District 43 E

Results as of: 04/30/2018

GMT: STEVE ANTON

LOCATION KENTUCKY

GMT CA

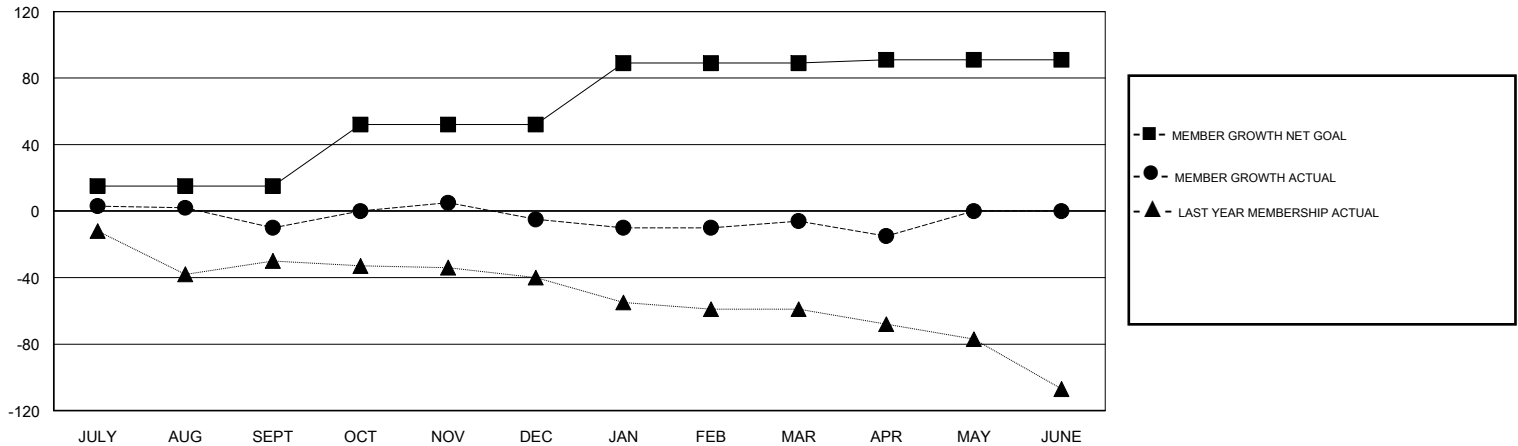
Clubs			
RESULTS FOR 2017-2018			
QUARTER	NEW CLUB GOAL	NEW CLUBS	DROPPED CLUBS
JULY/AUG/SEPT	1	0	2
OCT/NOV/DEC	0	0	1
JAN/FEB/MAR	1	0	0
APR/MAY/JUNE	0	0	0

Members			
RESULTS FOR 2017-2018			
QUARTER	MEMBER GROWTH NET GOAL	MEMBER GROWTH ACTUAL	DROPPED MEMBERS ACTUAL (including transfers)
JULY/AUG/SEPT	15	24	33
OCT/NOV/DEC	37	29	18
JAN/FEB/MAR	37	25	22
APR/MAY/JUNE	2	3	12

GOALS AND ACTUAL NEW CLUBS CUMULATIVE



GOALS AND ACTUAL MEMBERS CUMULATIVE



DROPPED CLUBS: 3	22 CLUBS OF 35 ADDED 1 OR MORE NEW MEMBERS	<u>GENDER DISTRIBUTION</u> MALE 637 (71.41%) FEMALE 255 (28.59%) Women Percentage Fiscal Year Goal: 3%
<u>DROPPED MEMBERS</u> DECEASED 8 CLUB CANCELLED 0 OTHER 77 TOTAL 85	CLICK HERE FOR CUMULATIVE MEMBERSHIP DATA	TOTAL FAMILY UNIT MEMBERS 197 FAMILY MEMBERS PAYING HALF DUES 100